



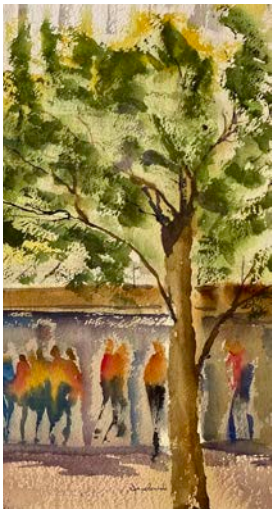
**HHG**  
**Artists in Residence.**  
SHOWCASING EMERGING CREATIVES

# 'J to Z'

JANE ZANTI







## 'J TO Z' BRINGS TOGETHER WORKS THAT DEFINE JANE ZANDI'S PRACTICE.

"When selecting works for this exhibition, I wanted to present what I truly enjoy painting - subjects that reflect who I am as an artist and what others find relatable in my watercolours.

As a result, this exhibition includes works painted outdoors en plein air. These paintings are shown as they were captured in the moment, responding directly to light, atmosphere, and place. Several studio works on display also began as plein air studies before being developed further.

Painting on Yupo is something I find great fun; its unpredictability often leads to surprising and engaging outcomes, some of which have become exhibition-worthy works.

Life drawing is another essential and enjoyable part of my practice, strengthening my observation and supporting my broader body of work.

Hearing someone say, "I know that beach - I went for a swim there," is especially rewarding, as it shows the work has connected with their own experience.

Please enjoy my world, my way.

JZ"



**HHG**  
**Artists in Residence.**  
SHOWCASING EMERGING CREATIVES





# Jane Zandi






## ARTIST STATEMENT



Jane Zandi is an Australian artist known for her loose impressionist approach, working predominantly in watercolour. She has exhibited and won awards internationally and is currently the President of the Watercolour Society WA.

Painting outdoors is an essential part of Jane's practice; being immersed in natural light and atmosphere allows Jane to capture the immediacy of a place, and these plein air studies often spark new studio works shaped by imagination and memory. Regular life drawing keeps Jane's eye sharp and brings vitality to the figures, animals, and scenes that emerge in her watercolours. Jane paints landscapes, people, animals, and still life, inspired by travel and the world.

## CONTACT DETAILS

-  0403 940 699
-  [janezandiwatercolours@gmail.com](mailto:janezandiwatercolours@gmail.com)
-  @jane\_zandi
-  JaneZandiArt
-  [janezandi.com](http://janezandi.com)





ARTIST: JANE ZANTI | 5





### **"COOL OF THE BILLABONG"**

Watercolour on paper  
Framed  
95cm x 74cm

**\$700**



### **"MALL TRAFFIC"**

Watercolour on paper  
**Plein Air**  
Framed  
58cm x 75cm

**\$500**





## "MATILDA BAY, BLUE HOUR"

Dyptich Watercolour on paper  
Framed  
94cm x 46cm

**\$800**

## "FILTERED LIGHT, BORANUP FORREST"

Watercolour on paper  
**Plein Air**  
Framed  
58cm x 75cm

**\$500**



## "BETWEEN GLASS AND WATER"

Watercolour on paper  
Framed  
58cm x 75cm

**\$500**



ARTIST: JANE ZANTI | 7



### **"LIGHT AT THE PAVILLION"**

Watercolour on paper  
Framed  
58cm x 75cm

**\$500**



### **"VERTICALS IN BLUE AND GOLD"**

Watercolour on paper  
**Plein Air**  
Framed  
58cm x 75cm

**\$500**



### **"IT'S IN THE SHED"**

Watercolour on paper  
**Plein Air**  
Framed  
58cm x 75cm

**\$500**





## "THE PYLON, COTTESLOE"

Watercolour on paper  
Framed  
95cm x 74cm

**\$700**

# ARTIST'S FAVOURITE PIECE

ARTIST: JANE ZANTI | 9

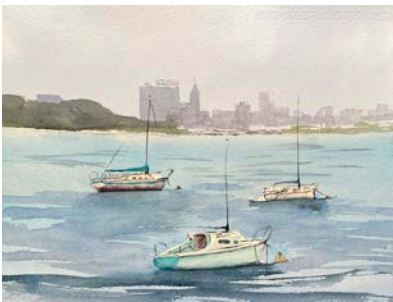




### **"BOORLOO BRIDGE"**

Watercolour on paper  
Framed  
58cm x 75cm

**\$500**



### **"MATILDA BAY TO PERTH"**

Watercolour on paper  
**Plein Air**  
Framed  
56cm x 46cm

**\$400**



### **"DELICATE SILENCE"**

Watercolour on paper  
Framed  
56cm x 46cm

**\$400**





## "RUST BUCKET"

Watercolour on paper  
Framed  
56cm x 46cm

**\$400**



## "RESTING TOGETHER"

Watercolour on paper  
**Plein Air**  
Framed  
56cm x 46cm

**\$400**



## "CHILLING AT THE BEACH"

Watercolour on paper  
Framed  
56cm x 46cm

**\$400**



ARTIST: JANE ZANTI | 11





**"CHILLING AT THE BEACH  
NO 1"**

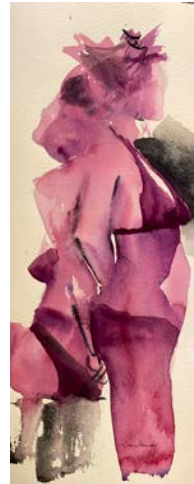
Watercolour on paper  
Framed  
57cm x 35cm

**\$200**

**"CHILLING AT THE BEACH  
NO 2"**

Watercolour on paper  
Framed  
57cm x 35cm

**\$200**



**"CHILLING AT THE BEACH  
NO 3"**

Watercolour on paper  
Framed  
57cm x 35cm

**\$200**





## "ROUND FORMS"

Watercolour on paper  
Framed  
46cm x 37cm

**\$300**



## "SUMMER RED"

Watercolour on paper  
Framed  
46cm x 37cm

**\$300**



## "ALL READY"

Watercolour on paper  
Framed  
46cm x 37cm

**\$300**



ARTIST: JANE ZANTI | 13



## **"FRESHWATER BOATHOUSES"**

Watercolour on paper  
Framed  
46cm x 37cm

**\$300**



## **"WAITING AT THE RACK"**

Watercolour on paper  
Framed  
46cm x 37cm

**\$300**



## **"KINGS PARK IN EVERLASTING BLOOM"**

Watercolour on paper  
Framed  
46cm x 37cm

**\$300**





## "THE TEAHOUSE"

Watercolour on paper

**Plein Air**

Framed

46cm x 37cm

**\$300**



HEARING SOMEONE SAY,

**"I KNOW THAT BEACH-  
I WENT FOR A SWIM  
THERE,"**

IS ESPECIALLY REWARDING,  
AS IT SHOWS THE WORK HAS  
CONNECTED WITH THEIR OWN  
EXPERIENCE.

ARTIST: JANE ZANTI | 15





# PAINTING ON YUPO

Yupo is a paper made from polypropylene, so it is synthetic, super smooth and non-porous. The paints behave differently in comparison to organic 100% cotton watercolour paper. I find it unpredictable and a lot of fun to paint on, particularly when gravity is used to help the paint move on the surface.



## "VERTICALS"

Watercolour on Yupo  
Framed  
46cm x 37cm

**\$300**





### **"WHERE'S THE START LINE?"**

Watercolour on Yupo  
Framed  
46cm x 37cm

**\$300**



### **"SUGAR RUSH"**

Watercolour on Paper  
Framed  
46cm x 37cm

**\$300**



### **"RETAIL THERAPY"**

Watercolour on Yupo  
Framed  
46cm x 37cm

**\$300**

ARTIST: JANE ZANTI | 17





# THE ARTIST'S PROCESS



## PLEIN AIR

I first learned the importance of painting outdoors at my initial watercolour workshop, where I was encouraged to work directly from life as often as possible. Embracing this approach has strengthened all aspects of my practice, and on occasion these plein air works develop into exhibition-ready paintings in their own right.





# SKETCHBOOKING

My sketchbooks are a space to practice, experiment, and push compositional boundaries. Ideas explored here often inform larger works, with some sketches later reworked and appearing as finished paintings in exhibitions.

ARTIST: JANE ZANTI | 19





## ABOUT THE PROGRAM

HHG Legal Group's Artists in Residence program was established during the pandemic to help support the Arts industry during a challenging time. Since the program began, we have welcomed over 11 exhibitions to our office, showcasing a diverse range of Western Australian artistic practice.

Held in HHG Legal Group's Perth CBD office, this program allows select artists to showcase their work across the client floor, with over 30 metres of hanging space.

Email [art@hhg.com.au](mailto:art@hhg.com.au) to find out more or express your interest in becoming a Resident.

## ARTIST CONTACT DETAILS

### JANE ZANTI

📞 0403 940 699

✉ [janezandiwatercolours@gmail.com](mailto:janezandiwatercolours@gmail.com)

🌐 [janezandi.com](http://janezandi.com)



Level 8, Cloisters Square | 863 Hay Street | Perth 6000  
**(08) 9322 1966** | [reception@hhg.com.au](mailto:reception@hhg.com.au) | [hhg.com.au](http://hhg.com.au)

